

**FOR SALE**

# 15,000 SF Industrial Facility

1236 Trask Parkway  
Seabrook, SC 29940



**15,000 SF industrial facility located at the intersection of U.S. Hwy 21 and U.S. Hwy 17. Property features great access, visibility, and proximity to Interstate 95 and both the Port of Savannah and the Port of Charleston.**

## BUILDING/SITE SPECIFICS

Address:	1236 Trask Parkway Seabrook, SC
Property ID:	R700-020-000-0008-0000
Square Footage:	15,000 square feet
Acres:	12.2 acres
Utilities:	On-Site Septic, Well, and Water Tank
Parking:	24 spaces
Foundation:	Raised Slab
Building Frame:	Steel, wood and masonry
Exterior Walls:	Metal
Roof Type / Material:	Sloped / Metal panel



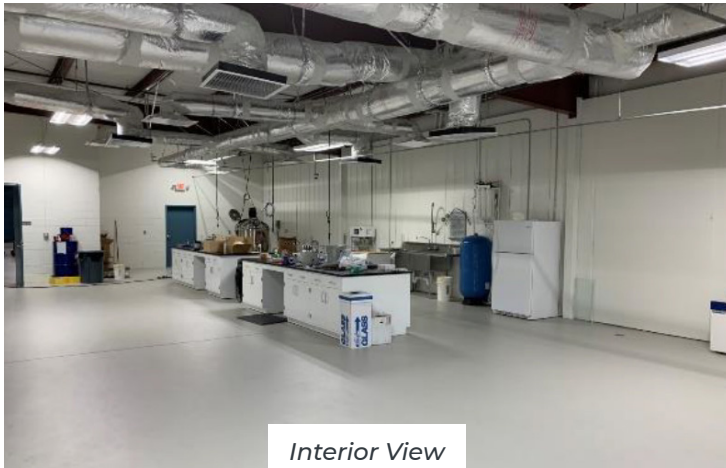




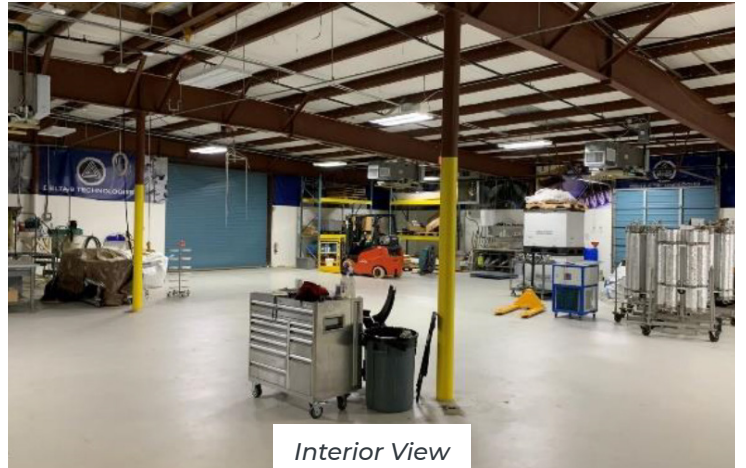
Front View



Rear View



Interior View



Interior View



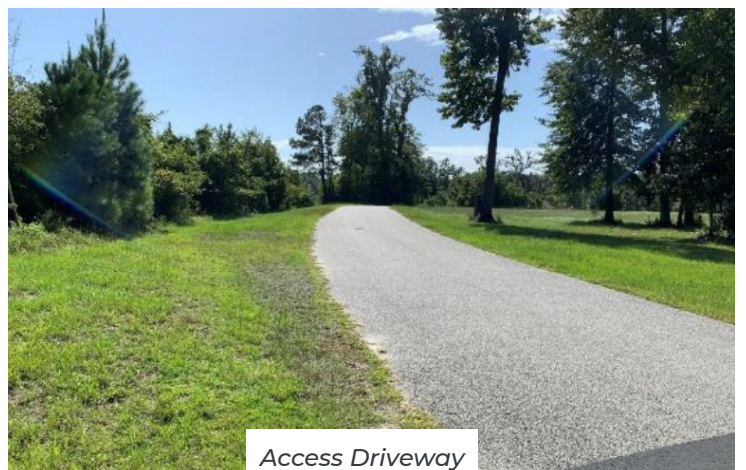
Explosion Containment Room



Walk-In Cooler



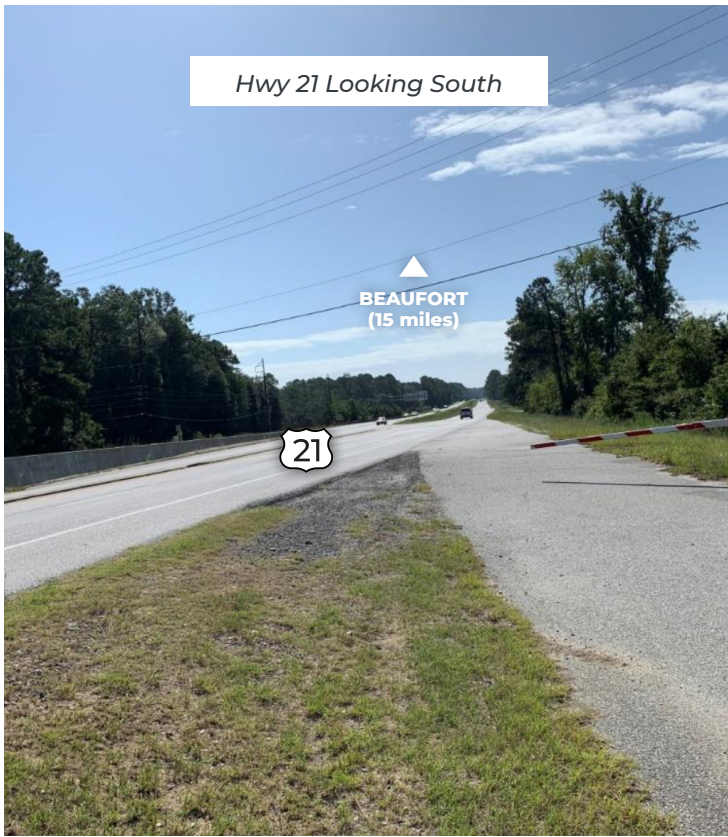
Water Tank & Pump House at Rear



Access Driveway



Hwy 21 Looking South



Hwy 21 Looking North



### DEMOGRAPHIC SNAPSHOT

DRIVE TIME	POPULATION
30 minutes	69,768
45 minutes	185,596
60 minutes	501,379

### DRIVING DISTANCES

Interstate-95:	14 miles
Port of Savannah:	50 miles
Port of Charleston:	56 miles
Savannah Int'l Airport:	52 miles
Charleston Int'l Airport:	55 miles

BEAUFORT COUNTY, SOUTH CAROLINA


Good for your **business**. Good for your **soul**.



**CHARLIE STONE**  
Sr. Project Manager

 [cstone@beaufortscedc.org](mailto:cstone@beaufortscedc.org)

 [/company/BeaufortSCEDC](https://www.linkedin.com/company/BeaufortSCEDC)

 (843) 226-5829

 [/BeaufortSCEDC](https://www.facebook.com/BeaufortSCEDC)

