

## SPACE AVAILABLE FOR LEASE

Bluffton Pkwy & Buckwalter Pkwy  
Bluffton, SC 29910

# Buckwalter Place Commerce Park

97 Progressive Street, Bluffton, SC 29910



## LEASE RATE

**\$35/sq ft**

**(2) TENANT SPACES AVAILABLE FOR OFFICE/FLEX DEVELOPMENT IN THE HEART OF BLUFFTON**

- ▶ Buckwalter Place is a 94 acre multi-county business park located in the geographic center of Bluffton.
- ▶ Equidistant from Savannah to the south, Beaufort to the north, Hilton Head Island to the east, and I-95 to the West.
- ▶ Available spaces:
  - Tenant 1: 1,380 sq ft available
  - Tenant 2: 1,200 sq ft available
- ▶ Located in Buckwalter Place Planned Unit Development.
- ▶ Delivered as white box.

- Centrally-located with easy access to major transportation routes.
- 2nd fastest-growing town in South Carolina with an award-winning quality of life.
- Strong local workforce, including nearby universities and 800 exiting military annually.



**Beaufort County**  
Economic Development Corporation

[ThriveBeaufort.org](http://ThriveBeaufort.org)



N

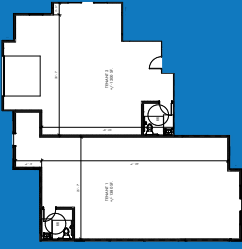


SOUTHERN BARREL CO.

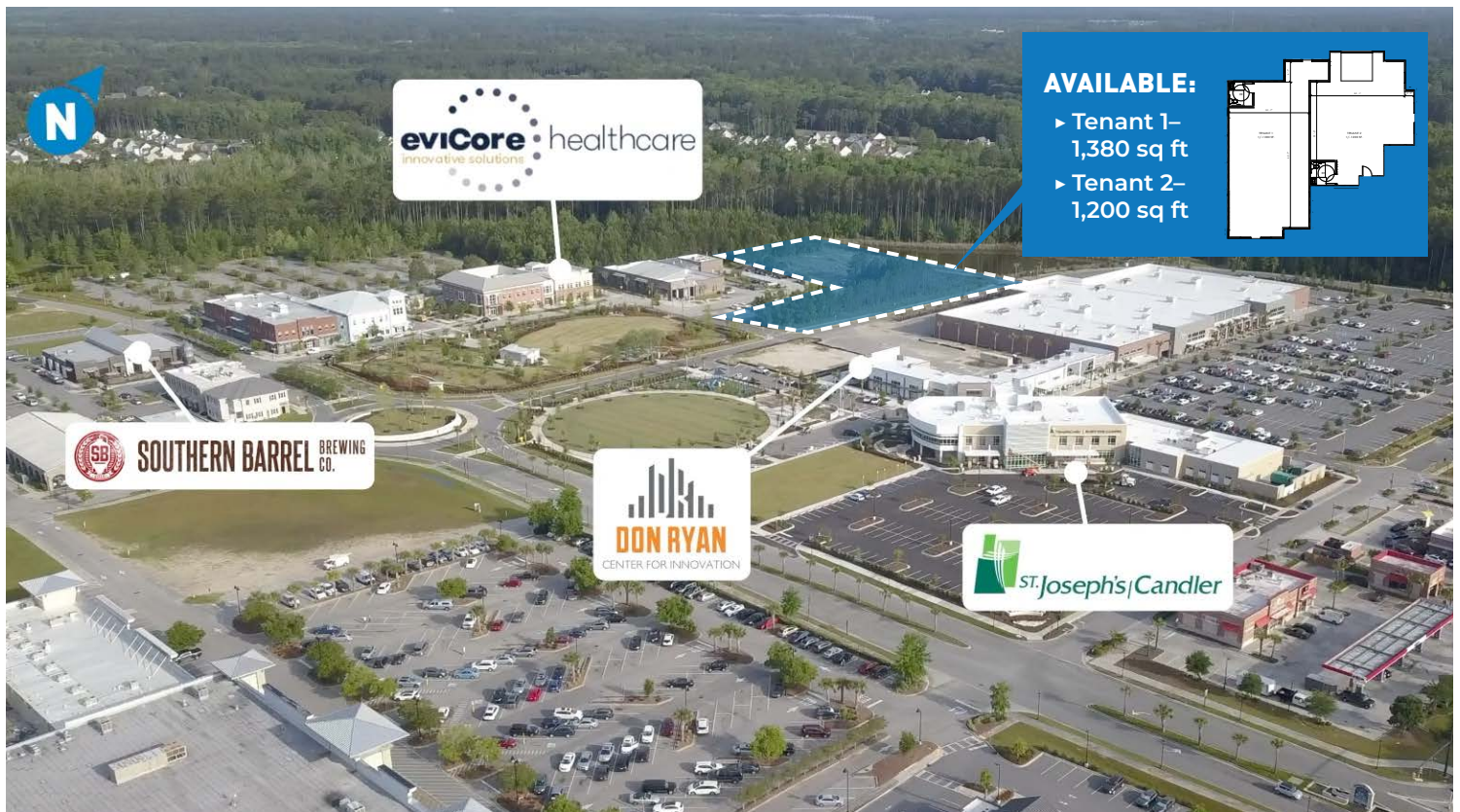


AVAILABLE:

- ▶ Tenant 1-  
1,380 sq ft
- ▶ Tenant 2-  
1,200 sq ft







### DEMOGRAPHIC SNAPSHOT

DRIVE TIME	POPULATION	WORKFORCE
30 minutes	98,243	53,231
45 minutes	336,412	192,267
60 minutes	511,502	297,675

Source: ESRI, July 2025

### DISTANCES TO:

Interstate-95:	16 miles
Hilton Head Airport:	16 miles
Savannah Int'l Airport:	24 miles
Charleston Int'l Airport:	91 miles
Jacksonville Int'l Airport:	153 miles
Port of Savannah:	19.5 miles
Port of Charleston:	90 miles

BEAUFORT COUNTY, SOUTH CAROLINA

**Good for your business. Good for your soul.**



**JOHN O'TOOLE**  
Executive Director

✉ [jotoole@thrivebeaufort.org](mailto:jotoole@thrivebeaufort.org)

in [/company/BeaufortSCEDC](https://www.linkedin.com/company/BeaufortSCEDC)

☎ (843) 226-3462

f [/BeaufortSCEDC](https://www.facebook.com/BeaufortSCEDC)

