

SPACE AVAILABLE FOR LEASE

Bluffton Pkwy & Buckwalter Pkwy
Bluffton, SC 29910

Buckwalter Place Commerce Park

97 Progressive Street, Bluffton, SC 29910



LEASE RATE

\$35/sq ft

(2) TENANT SPACES AVAILABLE FOR OFFICE/FLEX DEVELOPMENT IN THE HEART OF BLUFFTON

- ▶ Buckwalter Place is a 94 acre multi-county business park located in the geographic center of Bluffton.
- ▶ Equidistant from Savannah to the south, Beaufort to the north, Hilton Head Island to the east, and I-95 to the West.
- ▶ Available spaces:
 - Tenant 1: 1,380 sq ft available
 - Tenant 2: 1,200 sq ft available
- ▶ Located in Buckwalter Place Planned Unit Development.
- ▶ Delivered as white box.

- Centrally-located with easy access to major transportation routes.
- 2nd fastest-growing town in South Carolina with an award-winning quality of life.
- Strong local workforce, including nearby universities and 800 exiting military annually.



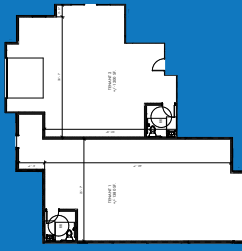
Beaufort County
Economic Development Corporation

ThriveBeaufort.org

N

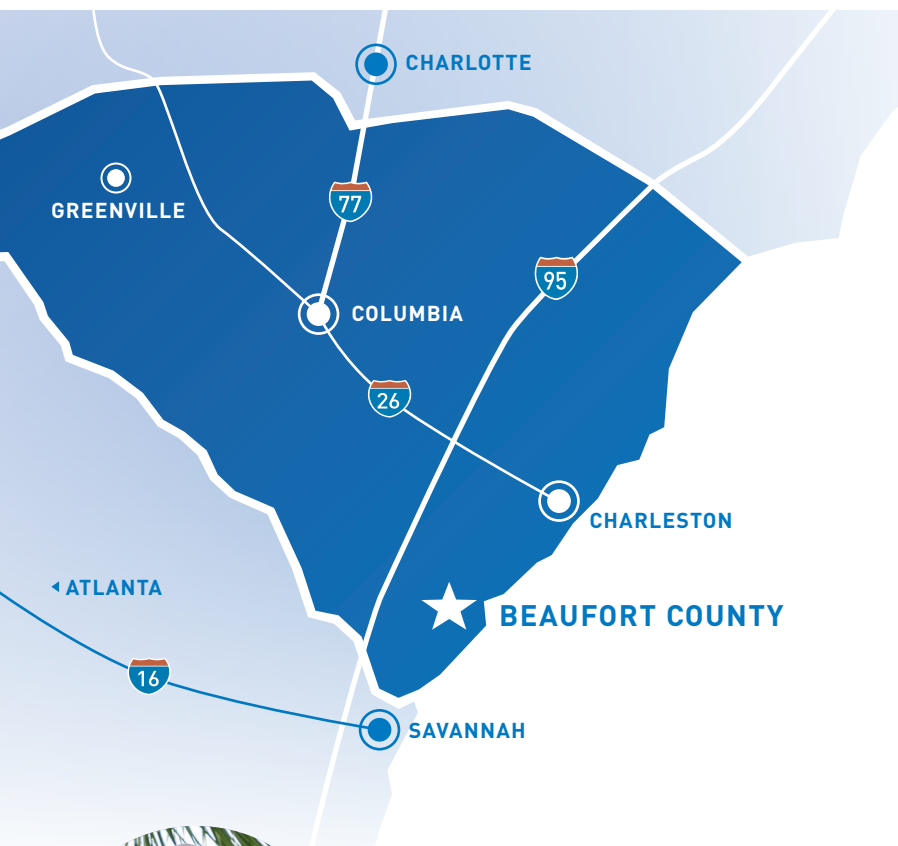
AVAILABLE:

- ▶ Tenant 1–
1,380 sq ft
- ▶ Tenant 2–
1,200 sq ft



SOUTHERN BARREL CO.
BREWING





DEMOGRAPHIC SNAPSHOT

DRIVE TIME	POPULATION	WORKFORCE
30 minutes	102,799	55,632
45 minutes	357,524	205,688
60 minutes	515,309	299,509

Source: ESRI, December 2025

DISTANCES TO:

Interstate-95:	16 miles
Hilton Head Airport:	16 miles
Savannah Int'l Airport:	24 miles
Charleston Int'l Airport:	91 miles
Jacksonville Int'l Airport:	153 miles
Port of Savannah:	19.5 miles
Port of Charleston:	90 miles

BEAUFORT COUNTY, SOUTH CAROLINA

Good for your business. Good for your soul.



JOHN O'TOOLE
Executive Director

✉ jotoole@thrivebeaufort.org

in [/company/BeaufortSCEDC](https://www.linkedin.com/company/BeaufortSCEDC)

☎ (843) 226-3462

f [/BeaufortSCEDC](https://www.facebook.com/BeaufortSCEDC)

